

Register New User


From Student Progress Center

This page will show you how to register as a new user so you can view your child's grades, days absent, discipline and more.

Video

Register New User video

1. For first time users, click the button "Register New User" as shown below.



The image shows a user registration form with a light blue background. It contains the following elements from top to bottom: a label "User Name:" followed by a white text input field; a label "Password:" followed by a white text input field; a grey button labeled "Login"; and a horizontal bar containing two buttons: "Forgot Password?" on the left and "Register New User" on the right. A red circle with the number "1" is positioned over the "Register New User" button, with a red arrow pointing to it from the left.

2. Select your relationship with the student from the drop down menu and then enter your information into the proceeding fields.
 - **Note:** Not all of the information shown in the illustration below is required by every district.

Register New User

Step 1: Verification

Cancel

Relationship :

Last Name :

First Name :

Pin Number :

Street Address :

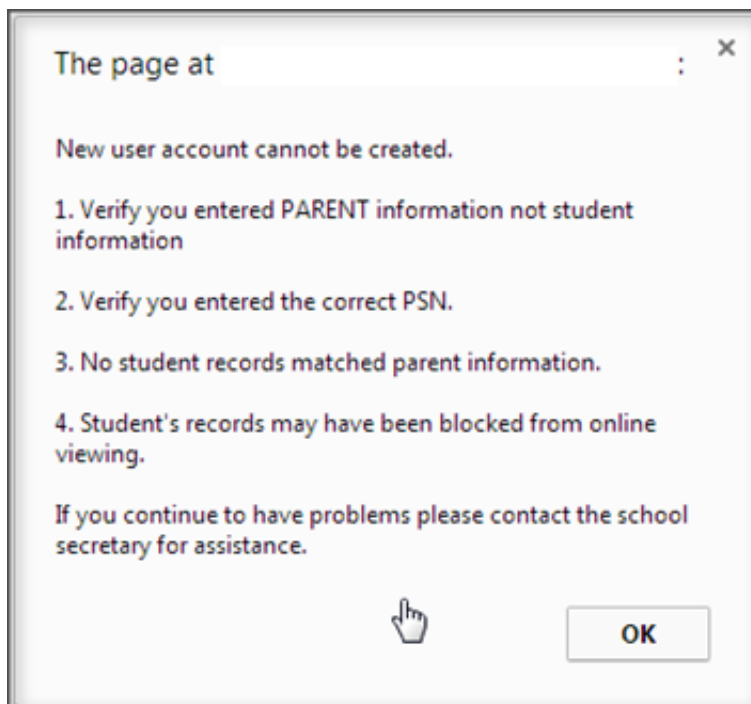
City :

State : LA

Zip :

Continue

3. If the information *did not* match the data system, a message like below will appear. A new user must be listed as a Guardian, Father, or Mother of the student and all information about the user must match exactly with what is in the system. If you believe all the information is typed correctly and you are getting the message below, please contact your child's school to verify/update your information or to see if a fee is owed.



4. If the information *did* match with the data system, a screen like below will be shown. Enter a User Name, then enter the desired Password (twice). Click on "Complete" to finish the new user registration.

Register New User

Step 2: User Creation

Cancel

User Name

Password

Confirm Password:

Complete

Student Progress Center Main Page

Retrieved from "http://spc.edgear.net/wiki/spc/index.php?title=Register_New_User&oldid=760"

- This page was last modified on 1 July 2015, at 11:48.
- This page has been accessed 14,153 times.
- [Privacy policy](#)
- [About Student Progress Center](#)
- [Disclaimers](#)